



**ZEBEDEE**  
INTERNATIONAL  
PRESCHOOL  
AND NURSERY  
思百德國際幼稚及幼兒園



# Class Information

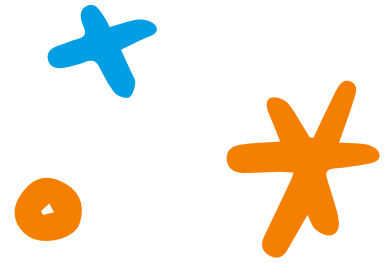
G/F Yat Wing House , Yat Nga Court, Tai Po , New Territories,  
Hong Kong

Tel: 2650-3339

<https://www.zebedee.edu.hk/>



# About us



"The school was opened in 2008 offering programmes of learning for children from 12 months to 6 years. Playgroup is the starting point where accompanied toddlers try new things and enjoy a sensory environment as well as meeting some new little friends.

Moving on, from 2 years old children join our nursery class for either a whole day or half day independently, without Mum or Dad. It is here they will learn how to share and develop some really good self-help skills.

Preschool children start at around 3 years old. The curriculum grows with them as they embark on inquiry-based learning that gets them thinking and wondering about their world. This leads on to K2 where they prepare for entry into international primary schools, the curriculum includes phonics, math, music, and P.E.

At the end of K2 the children's language development is now well on track and makes for a smooth transition into the K3 class. In this year, the children hone their English language skills with reading and writing, team games, and collaborative learning. Language is key to learning and Zebedee is an exceptionally good at immersion style English language provider.

The school also offers a wide choice of extracurricular classes from Monday to Saturday all conducted in English.



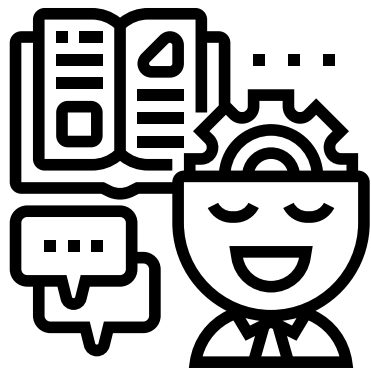


# Mission Statement

Our mission is to provide a safe and nurturing environment that inspires children to be independent learners with inquisitive minds. To gain knowledge and develop skills at their own pace with the confidence and resilience they need to make a positive contribution to our world.



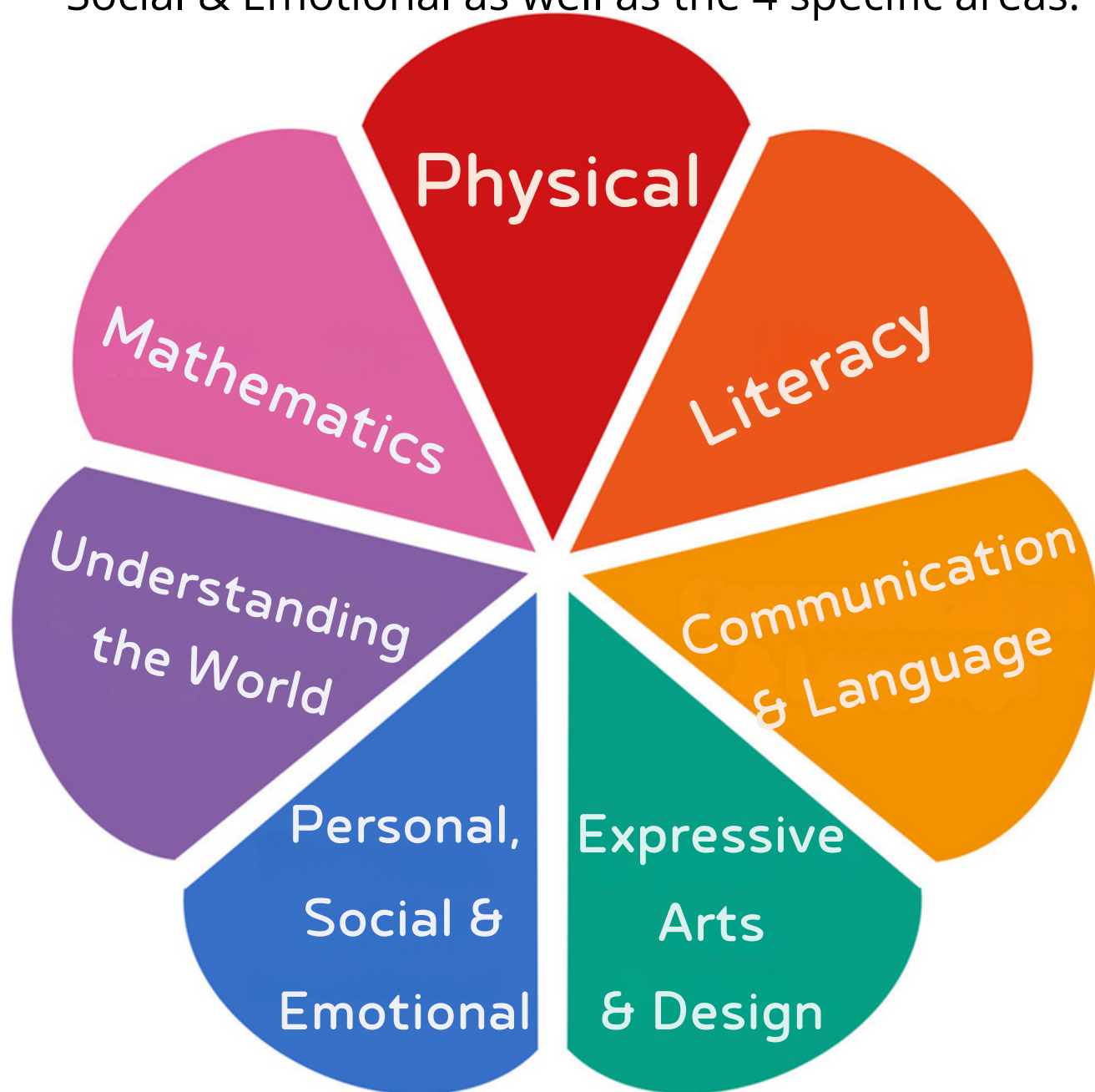




# Our School Curriculum

The Early Years Foundation Stage (EYFS) Framework is a guide used by teaching and educational staff to support the learning and development of children from birth to five years in the U.K.

There are 7 areas of the learning covered in total, 3 prime areas Physical, Communication & Language and Personal, Social & Emotional as well as the 4 specific areas.

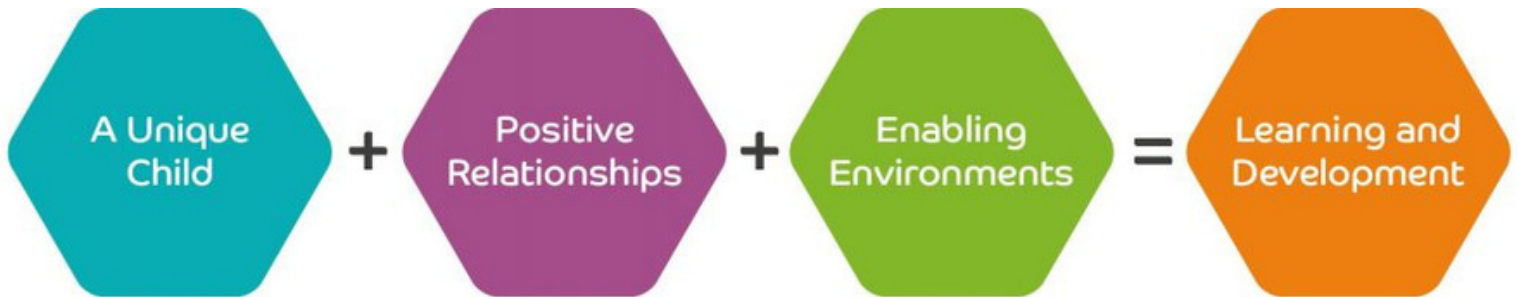






# Inquiry-based Learning

At Zebedee our approach to learning is inquiry-based, underpinned by the principles of the Early Years Foundation Stage.



Every child is a **unique child**, who is constantly learning and who can be resilient, capable, confident and self-assured.

*EYFS Statutory Framework*

Children learn to be strong and independent through **positive relationships**.

*EYFS Statutory Framework*

Children learn and develop well in **enabling environments** with teaching and support from adults, who respond to their individual interests and needs and help them to build their learning over time.

*EYFS Statutory Framework*

(Recognise the importance of **learning and development**. Children develop and learn at different rates.

*EYFS Statutory Framework*

## Practitioners

- observe and understand each child's development and learning, assess progress, plan for and act on next steps
- support babies and children to develop a positive sense of their own identity and culture
- identify any need for additional support
- keep children safe
- value and respect all children and families equally

## Positive relationships are

- warm and loving, and foster a sense of belonging
- sensitive and responsive to the child's individual needs, feelings and interests
- supportive of the child's own efforts and independence
- consistent in setting clear boundaries
- stimulating
- built on key person relationships in early years settings

## Enabling Environments

- value all people
  - value development and learning
- They offer
- stimulating resources and spaces, inside and outside, relevant to all the children's cultures and communities
  - rich learning opportunities through play and playful teaching
  - support for children to take risks and explore

## Learning and Development

Practitioners teach children by ensuring challenging, playful opportunities across the Prime and Specific areas of development and learning.

They foster the characteristics of effective early learning

- Playing and exploring
- Active learning
- Thinking creatively and critically

# The characteristics of effective learning

## **Playing and exploring**

Finding out, exploring, playing with the familiar, and being willing to have a go.

## **Active learning**

Being involved and concentrating, keep trying, enjoying achieving what they set out to do.

## **Creating and thinking critically**

Having their own ideas, making links between knowledge, and working with ideas.





# What happens in Baby Music & Movement

We welcomed our new students to our Baby Playgroup for children between the ages of 12 - 18 months old. We provide a safe and nurturing learning environment where the children can learn and play at their own pace. Our sensory play-based curriculum and a wide variety of activities aid in the acquisition of new social skills.

During our playgroup, the children explore and experience activities that also help advance their cognitive, physical, emotional, and social development. During the music sessions, we introduced simple musical instruments that make various types of sounds and notes.

**Baby Playgroup is the stepping stone to early brain development, join now or spread the word and watch your child flourish and grow!**







# Inside Baby Music & Movement



*"Playing with our new friends"*





# What happens in Playgroup

It was great to welcome the children back to our playgroup after a somewhat challenging year. During the Autumn season, our teddy bear topic was well enjoyed by the children. They loved the experience of playing in the playhouse that was set up in a way that mimicked and portrayed a house that a teddy bear would inhabit.

With a fireplace made with natural wood materials to stimulate sensory play, the children were able to exercise their cognitive abilities. While having a teddy bear afternoon tea party, the children learned simple table etiquette. In addition, the children were challenged intellectually with fun art projects, puzzles, colour sorting games, and more.

**Playgroup is a fantastic place to introduce children to their learning journey.**



# Inside Playgroup



*Developing Social Skills and Confidence*





# Our approach

A wholesome approach that begins with the child's existing knowledge. Then builds and develops the thoughts, ideas, and skills of each child.

## PLANNING

### What next?

Experiences and opportunities, learning environment, resources, routines, practitioners' role.

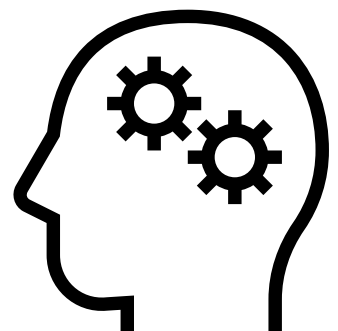
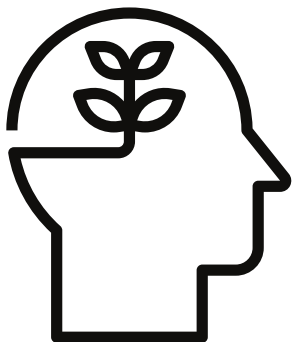
START HERE



**OBSERVATION**  
LOOK LISTEN AND NOTE  
DESCRIBING

## ASSESSMENT

Analysing observations and **DECIDING** what they tell us about the children.



# What happens in our Nursery Classes

Nursery is often the first step for children to attend a learning programme independently. Children have to be two years old to attend this class and those who have attended our English playgroup will have priority when applying for nursery places. We have found transition to attending nursery without a parent is easier when children have attended our in house playgroup prior to moving on to the nursery class. It helps a lot if a child is familiar with the school staff and environment.

At the beginning we understand it is sometimes difficult for both parents and children to let go. We are hands on at assisting families dealing with separation stress some children and parents feel when its time to leave each others company. We do this gradually and have found that good communication between parents and teacher can be instrumental in choosing the right time to say bye bye.





# Inside our Nursery classes



*Learning through a thematic approach*







# Field Trips

At Zebedee, we believe it's important to learn outside the classroom walls.

We are always looking for new places to visit, ways to include parents, and the opportunity to gain valuable knowledge.

## Field Trips -

- **Dim Sum Restaurant**
- **Kadoorie Farm**
- **Tai Po Railway Museum**
- **Walk to the Post office**
- **Strawberry picking**
- **Flower Market for Chinese New Year**
- **Tai Po Library**
- **Beach**
- **Heritage Museum**
- **Waterfront Park**
- **Science Museum**
- **Brighter Smiles Playland**
- **Tai Po Waterfront park**
- **Kam Tim Farm**



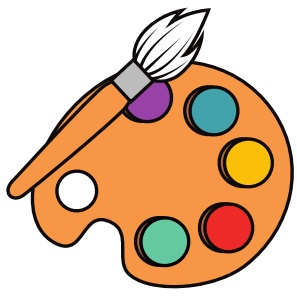




# Field Trips







# What happens in K1

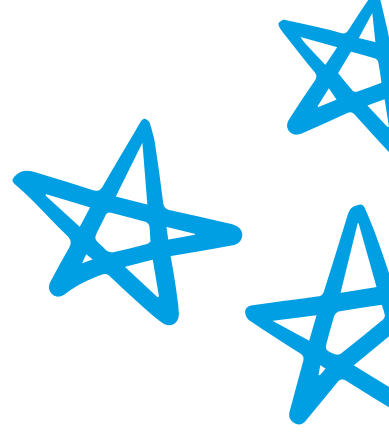
Children in K1 often have moved on from playgroup to nursery then into our K1 class. The British curriculum (EYFS) covers all 7 developmental areas. This is approached through Inquiry-based learning that engages students to make real world connections through explorations, this is achieved through units of work covered throughout the year. A lot happens in circle time discussions, questioning and interactions during their day. Students really enjoy this type of active learning as they are encouraged to relay their thinking in an open environment that allows them to explore.

In addition to the key areas of the EYFS, we incorporate phonics, recognizing letter sounds, pencil grip through tracing and recognizing the alphabet to prepare them for the K2 classes

We encourage family involvement in the class learning through our open-door policy, inviting parents to join into class activities and unit-based trips to help build a community of learners. By the end of the year students are ready to progress to our K2 class, where they can build on what they have learnt in the K1 class.



# Pictures of K1



Learning all about food. 



Recognising letters 





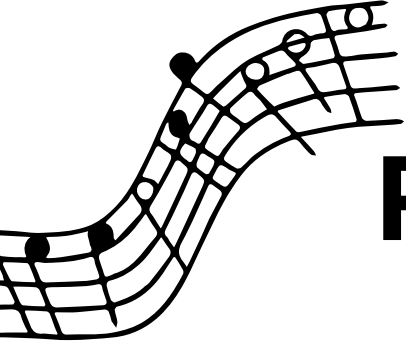
# What happens in K2

A 'child centered' approach in an inquiry based setting gives our K2s the opportunity to explore, investigate and find answers to relevant questions allowing them to be creative and think critically. Children in the K2 class practice new skills while acquiring knowledge through Inquiry-based learning covering four units per year which brings out the best in the children by investigating and collaborating using the English language throughout the sessions.

We keep to Early Years Foundation Stage (U.K.) standards by covering the seven areas which provide the right foundation needed as children develop and prepare for future learning. K2s work intensely on our phonics programme, 'Get Reading Right'/'Phonics Hero' which prepares our K2s to the next step of reading using phonics. This is also supported by providing access to borrowing story books which are for Early reading and mini phonic books.

Talking about skills, we focus on developing motor skills, especially fine motor where tracing, forming letters correctly, writing and having good pencil control, scissor practice, etc., which prepare children for independent learning as well as to have a positive attitude which enables them to master skills and be confident reaching the Early Years goals. We include our K2 families through Parent-Child activities, field trips, or outings which are both educational as well as building a community.



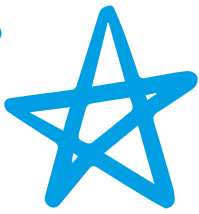


# Pictures of K2



*"We love learning our Phonics"*





# What happens in K3

In K3 we are preparing the students for Primary School.

Students in K3 will concentrate on Key Stage 1 (KS1) and will focus on a range of different subjects. For example, during Mathematics we will work on measurements, place value, addition and subtraction, shapes as well as introduce multiplication, division, and fractions towards the end of the year.

English is a huge part of our day to day ongoings. Every day students will practice asking and answering questions with each other and the teacher. We work on Phonics three days a week and both phonics and library books are sent home on a weekly basis to read and review at home. We practice our spelling weekly and work on our writing most days. Students become more confident in speaking English as the year progresses and are able to hold conversations with each other.

K3 also work on a range of other subjects such as science, geography, Arts and Design, Computing, Music and Design and Technology.

K3 becomes more independent throughout the year, they complete work individually as well as working well in groups. We aim to learn in a fun environment and students are given the opportunity to work inside and outside of school through a series of different field trips.





# Photos from K3.



We love working as a group to complete tasks.





# Extra Curricular

At Zebedee, students have opportunities to sign up for additional classes that we provide and we are always thinking of new ideas.

## Monster English

### Fun art



*Learning new skills in a great new fun art class.*



*Building vocabulary, becoming more confident with English, practicing reading and writing.*

# Extra Curricular

## Cooking Class



*Enjoying the noodles  
that we cooked with our  
freinds*

## English Smarties



*Building vocabulary and  
making new friends.*



# Where to find us...

